

103 系列充油式压力表

103 Liquid Filled Pressure Gauges

Description

103 系列采用不锈钢表壳，卡口式表圈，使仪表更容易维修。甘油填充，其他特征同 101 系列，可调指针可选。

103 series are made by SS case with bayonet bezel, so that the gauge is easier to be repaired. Glycerine filled, other features are same as 101 series. Adjustable pointer is optional.

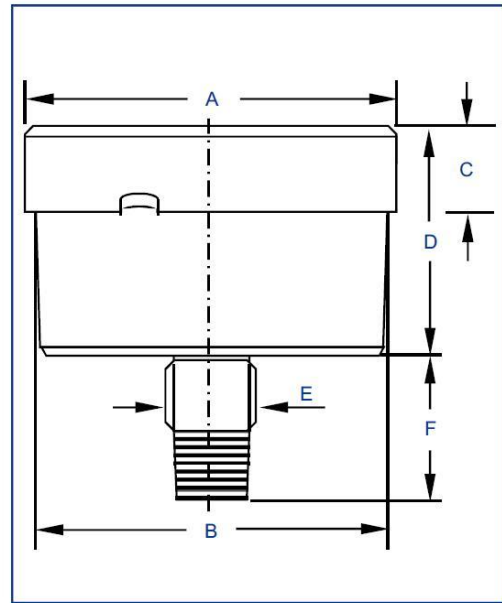
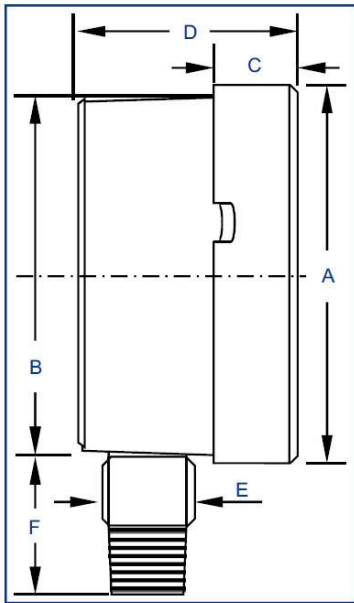


103A

Material Feature

指针 Pointer:	铝 Aluminium	表壳安装 Case mount:	旋边卡口 Bayonet Bezel Case
机芯 Movement:	黄铜 Brass	外壳 Case:	不锈钢 304, 抛光 SS304, Polished
接头 Connection:	黄铜 Brass	表圈 Ring:	不锈钢 304, 抛光 SS304, Polished
精度 Accuracy:	1.6%/1.0%*	螺纹尺寸 Thread Size:	1/8", 1/4", 3/8", 1/2"
表面 Window:	聚碳酸酯 Polycarbonate	弹簧管 Bourdon Tube:	磷青铜 Phosphorus Bronze
填充液 Filling Liquid:	甘油 Glycerine	压力范围 Pres. Range:	VAC~9PSI~15000PSI
*1.0%的精度可定制 *1.0% accuracy is available when required			

Dimensions



Code	Dia (mm)	Sizes (mm)					
		A	B	C	D	E	F
A103	40	-	-	-	-	-	-
B103	50	-	-	-	-	-	-
C103	63	69.0	61.0	10.4	29.0	14.0	24.0
D103	75	-	-	-	-	-	-
E103	80	-	-	-	-	-	-
G103	100	111.0	99.5	15.1	37.0	22.0	36.0

Main Mount type



Bottom Mount



Back Mount