

113 系列充油式压力表

113 Liquid Filled Pressure Gauges

Description

113 系列是全钢材质，卡口式表圈，充甘油，可调指针可选。

113 series are all stainless steel materials with bayonet bezel, glycerine filled. Adjustable pointer is optional.

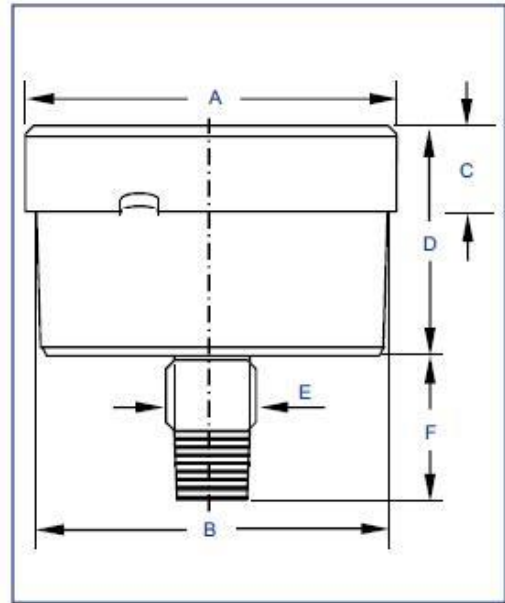
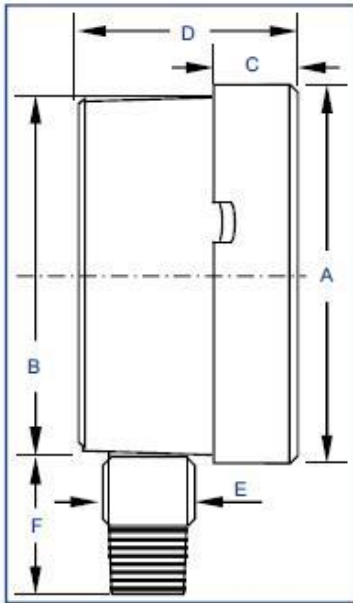


113A

Material Feature

指针 Pointer:	铝 Aluminium	表壳安装 Case mount:	旋边卡口 Bayonet Bezel Case
机芯 Movement:	不锈钢 SS304	外壳 Case:	不锈钢 304, 抛光 SS304, Polished
接头 Connection:	不锈钢 SS316	表圈 Ring:	不锈钢 304, 抛光 SS304, Polished
精度 Accuracy:	1.6%/1.0%*	螺纹尺寸 Thread Size:	1/8", 1/4", 3/8", 1/2"
表面 Window:	聚碳酸酯 Polycarbonate	弹簧管 Bourdon Tube:	不锈钢 SS316
填充液 Filling Liquid:	甘油 Glycerine	压力范围 Pres. Range:	VAC~9PSI~15000PSI
*1.0%的精度可定制 *1.0% accuracy is available when required			

Dimensions



Code	Dia (mm)	Sizes (mm)					
		A	B	C	D	E	F
A113	40	-	-	-	-	-	-
B113	50	-	-	-	-	-	-
C113	63	69.0	61.0	10.4	29.0	14.0	24.0
D113	75	-	-	-	-	-	-
E113	80	-	-	-	-	-	-
G113	100	111.0	99.5	15.1	37.0	22.0	36.0

Main Mount type



Bottom Mount



Back Mount