

221 系列普通压力表

221 Standard Pressure Gauges

Description

221 系列是经济型压力表，黑铁壳和黑色电镀，应用于空气、水处理设备。

221 series is economic cost pressure gauge, the case is made by mild steel and black plated, can be used for air, water equipment.

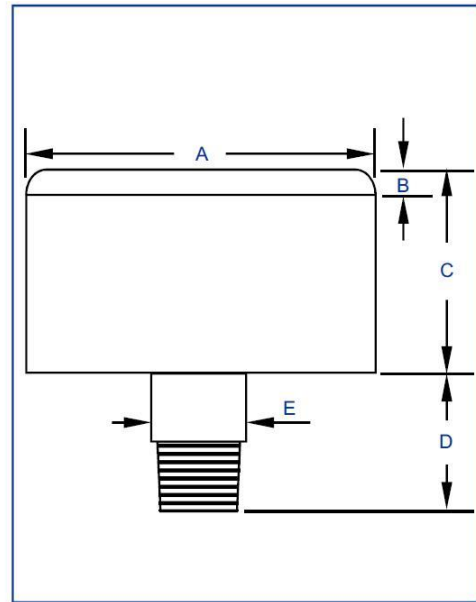
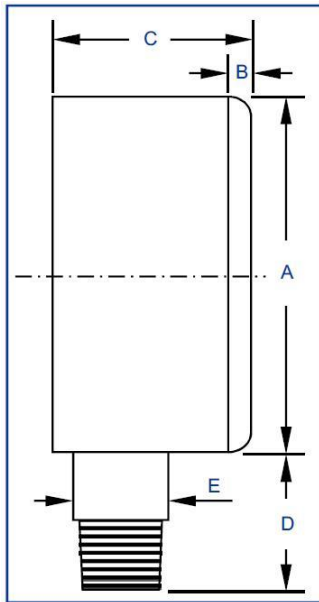


221A

Material Feature

指针 Pointer:	铝 Aluminium	外壳 Case:	钢 Mild Steel
机芯 Movement:	黄铜 Brass	表圈 Ring:	无表圈 None
接头 Connection:	黄铜 Brass	螺纹尺寸 Thread Size:	1/8", 1/4", 3/8", 1/2"
精度 Accuracy:	2.5%/2.0%/1.6%*	弹簧管 Bourdon Tube:	磷青铜 Phosphorus Bronze
表面 Window:	亚克力 Acrylic	压力范围 Pres. Range:	VAC~9PSI~15000PSI
标牌 Dial:	铝 Aluminium	表壳安装 Case mount:	按压式塑面 Press-fit plastic surface
*可提供 2.0%/1.6%的精度 *2.0%/1.6% accuracy is available when required			

Dimensions



Code	Dia (mm)	Sizes (mm)					
		A	B	C	D	E	F
A221	40	41.0	2.4	24.1	25.5	11.0	-
B221	50	52.0	3.0	28.0	29.0	14.0	-
C221	63	61.0	3.0	28.8	29.0	14.0	-
D221	75	-	-	-	-	-	-
E221	80	-	-	-	-	-	-
G221	100	-	-	-	-	-	-

Main Mount type



Bottom Mount



Back Mount