

LB107F 传感压力表

LB107F Sensored Pressure gauge

Description

LB107F 是一款线性输出传感表，输出是基于额外补偿的机械系统。
常应用于腐蚀性大气、振动和脉动环境、食品工厂、水设施、医疗。

LB107F is linear volt output, the output is based on a mechanical system with extra compensation.

Applications in corrosive atmospheres, vibration and pulsating environments, and food industry ,water suppliers, medical.

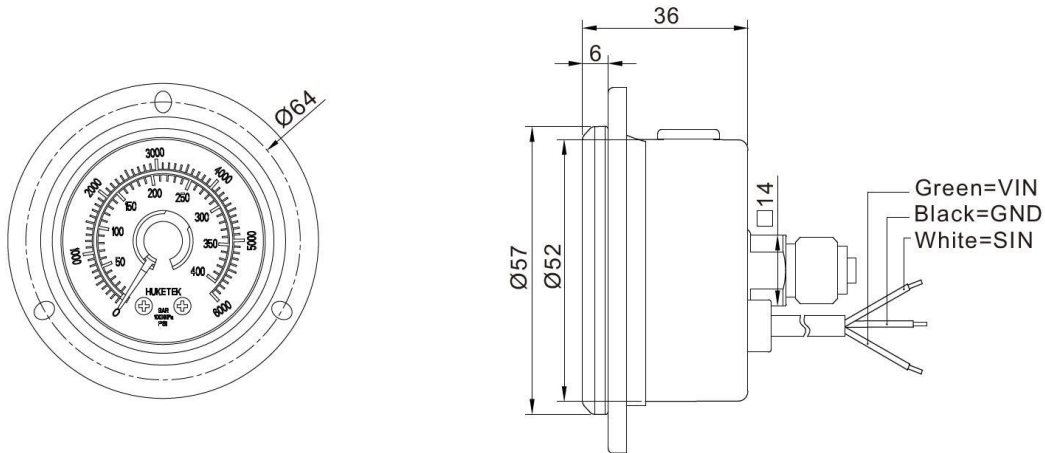


LB107F

Material Feature

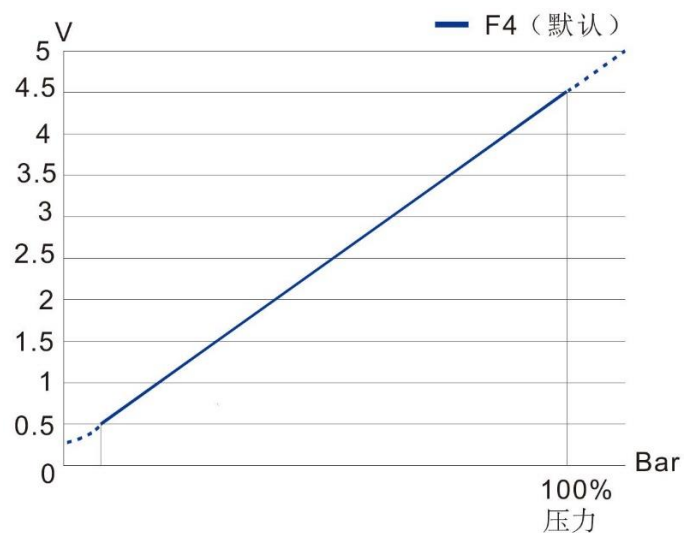
| | | | |
|-----------------------------------|--|-------------------|------------------------------|
| 指针 Pointer: | PA66+30%GF | 防护等级 Protection: | IP67 |
| 机芯 Movement: | 黄铜 Brass | 外壳 Case: | 不锈钢 304, 抛光 SS304, Polished |
| 填充液 Filling Liquid: | 甘油 Glycerine | 表圈 Ring: | 不锈钢 304, 抛光 SS304, Polished |
| 表径 Diameter: | 50mm | 接头 Connection: | 黄铜 Brass NPT/BSP/BSPT/Metric |
| 标牌 Dial: | 塑料 Plastic | 弹簧管 Bourdon Tube: | 磷青铜 Phosphorus Bronze |
| 表面 Window: | 聚碳酸酯 Polycarbonate | 压力范围 Pres. Range: | VAC~9PSI~15000PSI |
| 精度 Accuracy: | 机械信号 Mechanical: 1.6%/1.0%* 电信号 Electrical: 1.0%/0.6%* | | |
| *可按要求提供 * Available under request | | | |

Dimensions




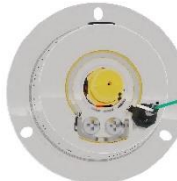




Output types

| 信号类型 (可定制) | | |
|---------------------------------|-----------|------------------------------|
| Signal Type (Can be customized) | | |
| 信号 Signal | 输入 Input | 输出 Output |
| F4 (默认 Default) | 5v | 0bar/0.50v~F.S./4.50v |
| F5 | 5v | 0bar/0.25v~F.S./4.15v |
| F6 | 5v | 0bar/0.25v~F.S./4.75v |
| F7 | 5v | 0bar/0.50v~F.S./4.41v |
| T4 | 9~24v | 0bar/0.50v~F.S./4.50v |
| T5 | 9~24v | 0bar/0.25v~F.S./4.15v |
| T6 | 9~24v | 0bar/0.25v~F.S./4.75v |
| T7 | 9~24v | 0bar/0.50v~F.S./4.41v |



Comparison Chart

| | | | | | |
|---------------------|---|---|--|---|---|
| Function |  | = |  | + |  |
| Cost Control |  | < |  | + |  |
| | Sensored Pressure Gauge | | Pressure Sensor | | General Pressure Gauge |