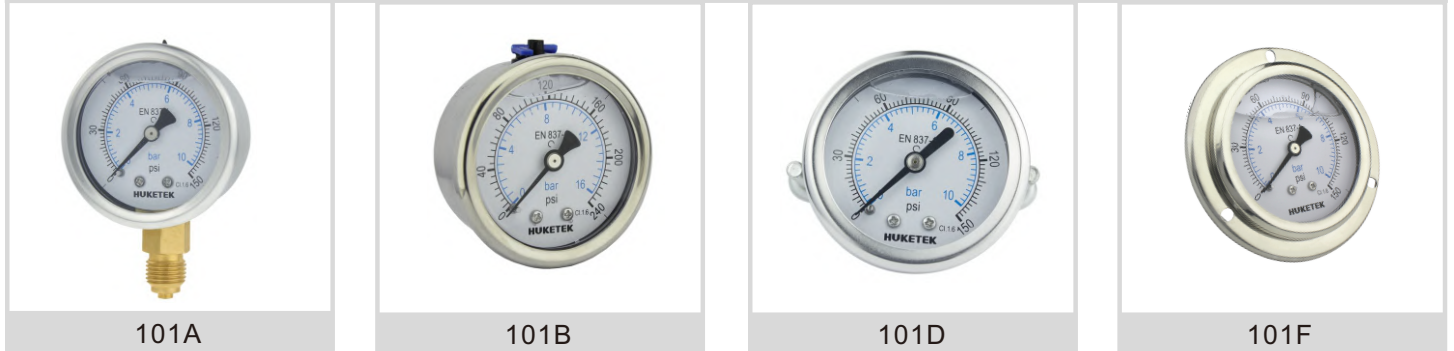


## 101 Series - Crimp SS Case Liquid Filled Pressure Gauge

101 Series has SS304 case with crimp bezel, brass internals and glycerine filled. Silicon oil optional.



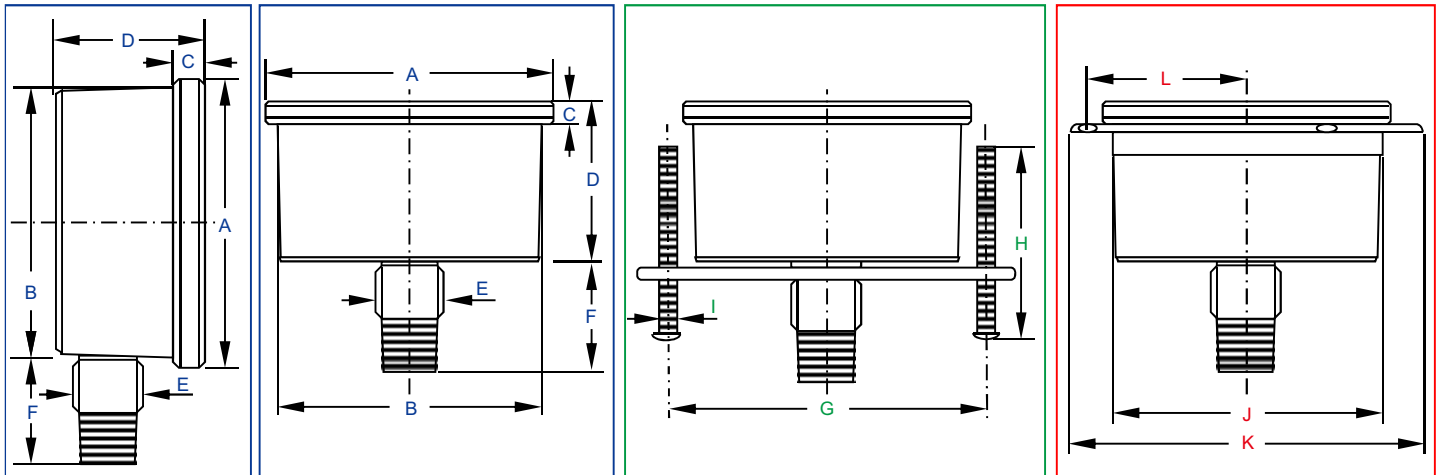
### Description

101 series is filled with glycerine/ silicon oil, which are used to resist vibration and pulsation, these gauges are suited to a broad range of plant, process, hydraulic, fluid power, etc.

### Material Feature

<b>Case</b>	SS304, Polished	<b>Connection</b>	Brass NPT/BSP/BSPT/Metric
<b>Ring</b>	SS304, Polished	<b>Thread Size</b>	1/8", 1/4", 3/8", 1/2"
<b>Window</b>	Polycarbonate or Tempered Glass	<b>Connection Type</b>	2 Parts
<b>Dial</b>	Aluminium	<b>Movement</b>	Brass
<b>Pointer</b>	Aluminium	<b>Bourdon Tube</b>	Phosphorus Bronze
<b>Accuracy</b>	1.6%/1.0%*	<b>Pres. Range</b>	VAC~9PSI~15000PSI

\*90% of the gauges are 1.0% accuracy under automated calibration technology even for 40mm.



### DIMENSIONS

Code	Dia (mm)	Size (mm)											
		A	B	C	D	E	F	G	H	I	J	K	L
A101	40	46.5	41.0	5.0	25.5	11.0	23.0	48.0	37.0	M4	43.0	62.0	26.5
B101	50	58.0	52.0	6.0	29.0	14.0	24.0	60.0	37.0	M5	54.0	73.0	32.0
C101	63	68.0	61.0	6.0	29.0	14.0	24.0	71.0	37.0	M5	63.0	84.0	37.0
D101	75	81.0	74.5	7.0	30.0	14.0	24.0	-	-	-	-	-	-
E101	80	87.0	80.0	7.0	30.0	14.0	24.0	-	-	-	-	-	-
G101	100	108.5	98.5	9.0	37.5	22.0	36.0	-	-	-	99.5	130.0	58.5