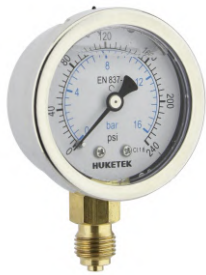


103 Series - Bayonet SS Case Liquid Filled Pressure Gauge

103 Series has SS304 case with bayonet bezel, brass internals and glycerine filled. Silicon oil optional.



103A



103B



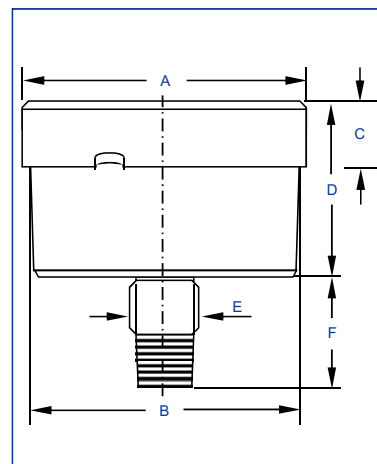
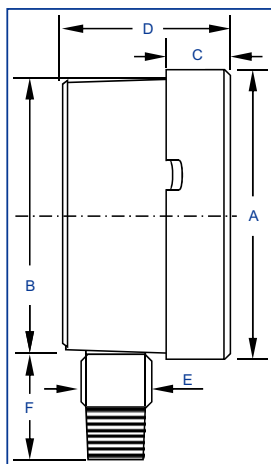
Description

103 series are made by SS case with bayonet bezel, so that the gauge is easier to be repaired. Glycerine /Silicon filled, other features are same as 101 series. Adjustable pointer is optional.

Material Feature

| | | | |
|-----------------|---------------------------------|------------------------|---------------------------|
| Case | SS304, Polished | Connection | Brass NPT/BSP/BSPT/Metric |
| Ring | SS304, Polished | Thread Size | 1/8", 1/4", 3/8", 1/2" |
| Window | Polycarbonate or Tempered Glass | Connection Type | 2 Parts |
| Dial | Aluminium | Movement | Brass |
| Pointer | Aluminium | Bourdon Tube | Phosphorus Bronze |
| Accuracy | 1.6%/1.0%* | Pres. Range | VAC~9PSI~15000PSI |

*90% of the gauges are 1.0% accuracy under automated calibration technology even for 40mm.



DIMENSIONS

| Code | Dia (mm) | Size (mm) | | | | | | | | | | | |
|------|----------|-----------|------|------|------|----|------|---|---|----|------|-----|------|
| | | A | B | C | D | E | F | G | H | I | J | K | L |
| A103 | 40 | - | - | - | - | - | - | - | - | - | - | - | - |
| B103 | 50 | - | - | - | - | - | - | - | - | - | - | - | - |
| C103 | 63 | 69.0 | 61.0 | 10.4 | 29.0 | 14 | 24.0 | 7 | 3 | M5 | 63 | 84 | 37 |
| D103 | 75 | - | - | - | - | - | - | - | - | - | - | - | - |
| E103 | 80 | - | - | - | - | - | - | - | - | - | - | - | - |
| G103 | 100 | 111.0 | 99.5 | 15.1 | 37.0 | 22 | 36.0 | - | - | - | 99.5 | 130 | 58.5 |