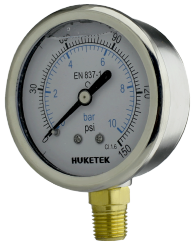


107 Series - Crimp SS Case Liquid Filled Pressure Gauge

107 Series has SS304 case with crimp bezel, brass internals and one part connection.



107A



107B



107D



107F

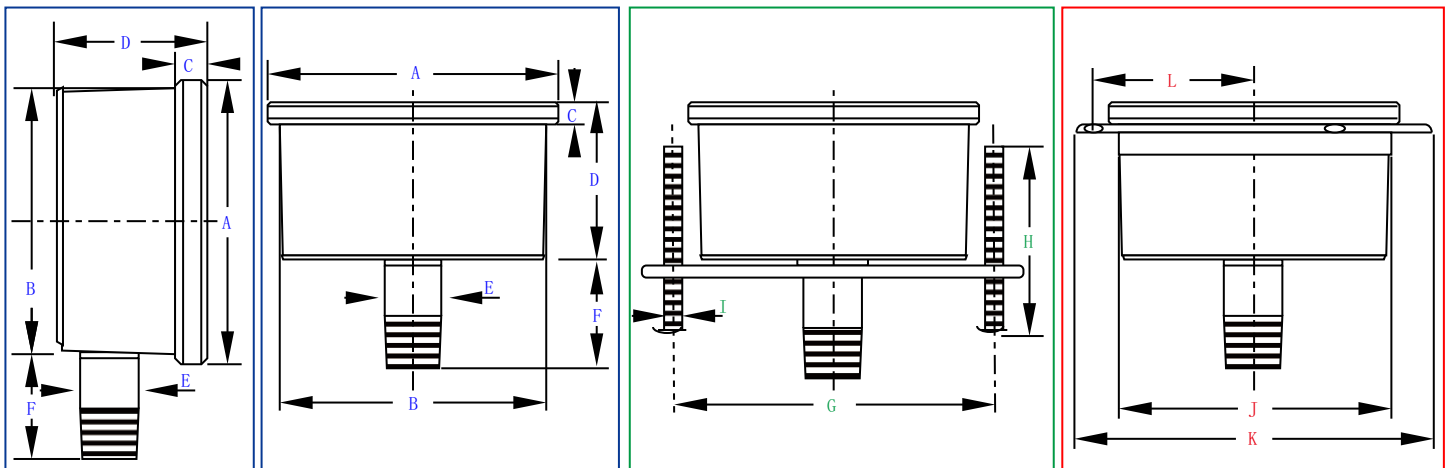
Description

107 series is stainless steel case, brass inner machine. It can be filled with glycerine/Silicon oil which are used to resist vibration and pulsation. These gauges are suited to a broad range of plant, process, hydraulic, fluid power, etc.

Material Feature

Case	SS304, Polished	Connection	Brass NPT/BSP/BSPT/Metric
Ring	SS304, Polished	Thread Size	1/8", 1/4", 3/8", 1/2"
Window	Polycarbonate/ Tempered Glass	Connection Type	1 Part
Dial	Aluminium	Movement	Brass
Pointer	Aluminium	Bourdon Tube	Phosphorus Bronze
Accuracy	1.6%/1.0%*	Pres. Range	VAC~9PSI~15000PSI

*90% of the gauges are 1.0% accuracy under automated calibration technology even for 40mm.



DIMENSIONS

Code	Dia (mm)	Size (mm)											
		A	B	C	D	E	F	G	H	I	J	K	L
A107	40	46.5	41.0	5.0	25.5	11.0	23.0	48.0	37.0	M4	43.0	62.0	26.5
B107	50	58.0	52.0	6.0	29.0	14.0	24.0	60.0	37.0	M5	54.0	73.0	32.0
C107	63	68.0	61.0	6.0	29.0	14.0	24.0	71.0	37.0	M5	63.0	84.0	37.0
D107	75	81.0	74.5	7.0	30.0	14.0	24.0	-	-	-	-	-	-
E107	80	87.0	80.0	7.0	30.0	14.0	24.0	-	-	-	-	-	-