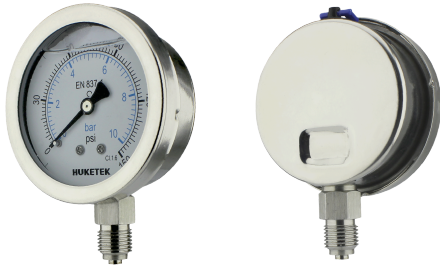
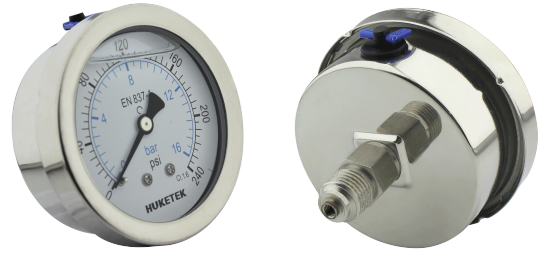


## 113 Series - Bayonet All SS Liquid Filled Pressure Gauge

113 Series is all SS gauge with bayonet bezel and glycerine filled. Silicon oil optional.



113A



113B

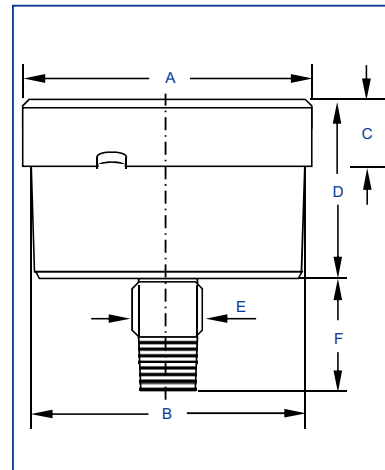
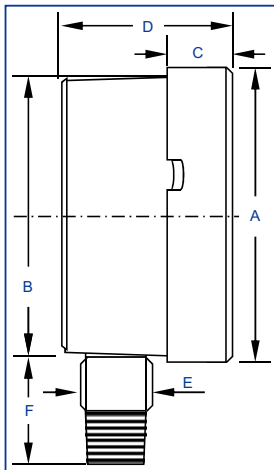
### Description

113 series are all stainless steel materials with bayonet bezel, glycerine filled. Adjustable pointer is optional.

### Material Feature

|                 |                                 |                        |                           |
|-----------------|---------------------------------|------------------------|---------------------------|
| <b>Case</b>     | SS304, Polished                 | <b>Connection</b>      | SS316 NPT/BSP/BSPT/Metric |
| <b>Ring</b>     | SS304, Polished                 | <b>Thread Size</b>     | 1/8", 1/4", 3/8", 1/2"    |
| <b>Window</b>   | Polycarbonate or Tempered Glass | <b>Connection Type</b> | 2 Parts                   |
| <b>Dial</b>     | Aluminium                       | <b>Movement</b>        | SS304                     |
| <b>Pointer</b>  | Aluminium                       | <b>Bourdon Tube</b>    | SS316L                    |
| <b>Accuracy</b> | 1.6%/1.0%*                      | <b>Pres. Range</b>     | VAC~9PSI~15000PSI         |

\*90% of the gauges are 1.0% accuracy under automated calibration technology even for 40mm.



### DIMENSIONS

| Code | Dia (mm) | Size (mm) |      |      |      |    |      |   |   |    |      |     |      |
|------|----------|-----------|------|------|------|----|------|---|---|----|------|-----|------|
|      |          | A         | B    | C    | D    | E  | F    | G | H | I  | J    | K   | L    |
| A113 | 40       | -         | -    | -    | -    | -  | -    | - | - | -  | -    | -   | -    |
| B113 | 50       | -         | -    | -    | -    | -  | -    | - | - | -  | -    | -   | -    |
| C113 | 63       | 69.0      | 61.0 | 10.4 | 29.0 | 14 | 24.0 | 7 | 3 | M5 | 63   | 84  | 37   |
| D113 | 75       | -         | -    | -    | -    | -  | -    | - | - | -  | -    | -   | -    |
| E113 | 80       | -         | -    | -    | -    | -  | -    | - | - | -  | -    | -   | -    |
| G113 | 100      | 111.0     | 99.5 | 15.1 | 37.0 | 22 | 36.0 | - | - | -  | 99.5 | 130 | 58.5 |