

221 Series - Mild Steel Case Standard Pressure Gauge

221 Series has mild steel case, brass internals.



221A



221B



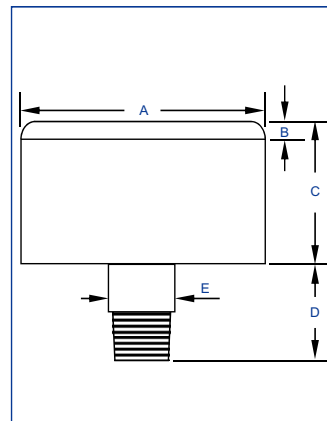
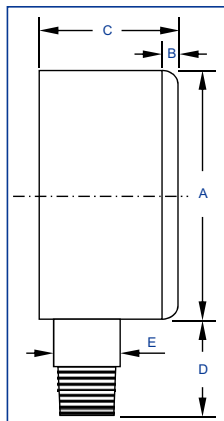
Description

221 series is economic cost pressure gauge, the case is made by mild steel and black plated, can be used for air, water equipment, etc.

Material Feature

Case	Mild Steel	Connection	Brass NPT/BSP/BSPT/Metric
Ring	None	Thread Size	1/8", 1/4", 3/8", 1/2"
Window	Acrylic	Connection Type	1 Part
Dial	Aluminium	Movement	Brass
Pointer	Aluminium	Bourdon Tube	Phosphorus Bronze
Accuracy	2.5%/2.0%/1.6%/1.0%*	Pres. Range	VAC~9PSI~15000PSI

*90% of the gauges are 1.0% accuracy under automated calibration technology even for 40mm.



DIMENSIONS

Code	Dia (mm)	Size (mm)											
		A	B	C	D	E	F	G	H	I	J	K	L
A221	40	41.0	2.4	24.1	25.5	11.0	-	-	-	-	-	-	-
B221	50	52.0	3.0	28.0	29.0	14.0	-	-	-	-	-	-	-
C221	63	61.0	3.0	28.8	29.0	14.0	-	-	-	-	-	-	-
D221	75	-	-	-	-	-	-	-	-	-	-	-	-
E221	80	-	-	-	-	-	-	-	-	-	-	-	-
G221	100	-	-	-	-	-	-	-	-	-	-	-	-