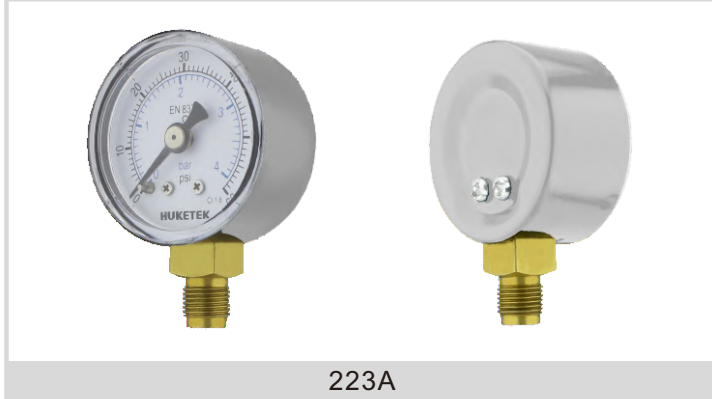


223 Series - Chromed Steel Case Standard Pressure Gauge

223 Series has plated mild steel case, brass internals.



223A



223B

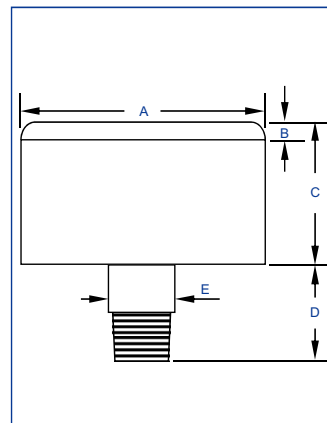
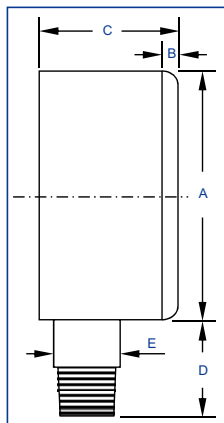
Description

223 series is economic cost pressure gauge, the case is made by plated mild steel, can be used for air, water equipment, etc.

Material Feature

Case	Mild Steel, Chromed	Connection	Brass NPT/BSP/BSPT/Metric
Ring	None	Thread Size	1/8", 1/4", 3/8", 1/2"
Window	Acrylic	Connection Type	1 Part
Dial	Aluminium	Movement	Brass
Pointer	Aluminium	Bourdon Tube	Phosphorus Bronze
Accuracy	2.5%/2.0%/1.6%/1.0%*	Pres. Range	VAC~9PSI~15000PSI

*90% of the gauges are 1.0% accuracy under automated callibration technology even for 40mm.



DIMENSIONS

Code	Dia (mm)	Size (mm)											
		A	B	C	D	E	F	G	H	I	J	K	L
A223	40	41.0	2.4	24.1	25.5	11.0	-	-	-	-	-	-	-
B223	50	52.0	3.0	28.0	29.0	14.0	-	-	-	-	-	-	-
C223	63	61.0	3.0	28.8	29.0	14.0	-	-	-	-	-	-	-
D223	75	-	-	-	-	-	-	-	-	-	-	-	-
E223	80	-	-	-	-	-	-	-	-	-	-	-	-
G223	100	-	-	-	-	-	-	-	-	-	-	-	-