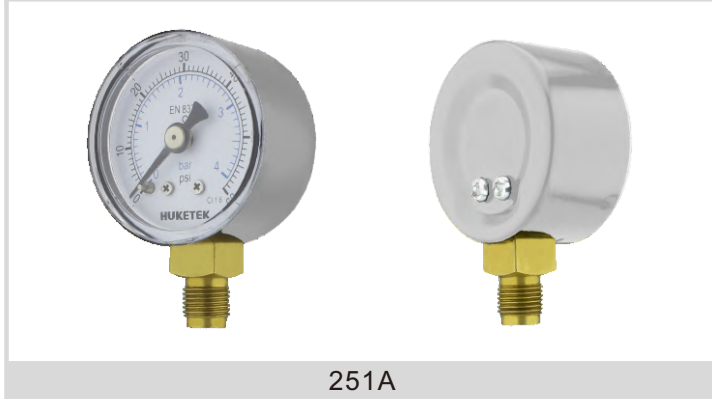


251 Series - SS Case Standard Pressure Gauge

251 Series has SS304 case, brass internals.



251A



251B

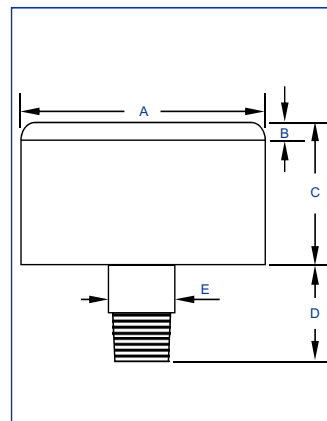
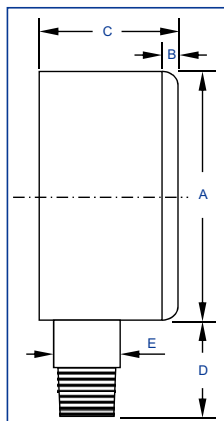
Description

251 series is economic cost pressure gauge, the case is made by ss, can be used for air, water equipment, etc.

Material Feature

Case	SS304	Connection	Brass NPT/BSP/BSPT/Metric
Ring	None	Thread Size	1/8", 1/4", 3/8", 1/2"
Window	Acrylic or Polycarbonate	Connection Type	1 Part
Dial	Aluminium	Movement	Brass
Pointer	Aluminium	Bourdon Tube	Phosphorus Bronze
Accuracy	2.5%/2.0%/1.6%/1.0%*	Pres. Range	VAC~9PSI~15000PSI

*90% of the gauges are 1.0% accuracy under automated calibration technology even for 40mm.



DIMENSIONS

Code	Dia (mm)	Size (mm)											
		A	B	C	D	E	F	G	H	I	J	K	L
A251	40	41.0	2.4	24.1	25.5	11.0	-	-	-	-	-	-	-
B251	50	52.0	3.0	28.0	29.0	14.0	-	-	-	-	-	-	-
C251	63	61.0	3.0	28.8	29.0	14.0	-	-	-	-	-	-	-
D251	75	-	-	-	-	-	-	-	-	-	-	-	-
E251	80	-	-	-	-	-	-	-	-	-	-	-	-
G251	100	-	-	-	-	-	-	-	-	-	-	-	-