

271 Series - All SS Standard Pressure Gauge

271 Series has SS case, brass internals.



271A



271B



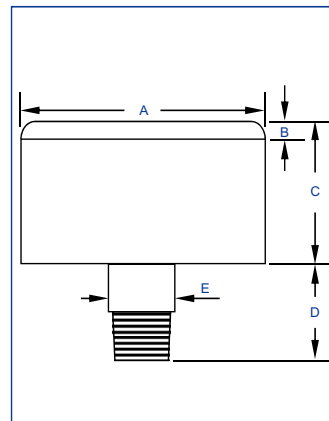
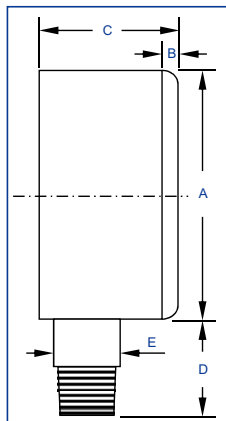
Description

271 series is economic cost gauge, the case is made by all ss case, can be used for air, water equipment, etc.

Material Feature

Case	SS304	Connection	SS316 NPT/BSP/BSPT/Metric
Ring	None	Thread Size	1/8", 1/4", 3/8", 1/2"
Window	Polycarbonate	Connection Type	1 Part
Dial	Aluminium	Movement	SS304
Pointer	Aluminium	Bourdon Tube	SS316
Accuracy	2.5%/2.0%/1.6%/1.0%*	Pres. Range	VAC~9PSI~15000PSI

*90% of the gauges are 1.0% accuracy under automated calibration technology even for 40mm.



DIMENSIONS

Code	Dia (mm)	Size (mm)											
		A	B	C	D	E	F	G	H	I	J	K	L
A271	40	41.0	2.4	24.1	25.5	11.0	-	-	-	-	-	-	-
B271	50	52.0	3.0	28.0	29.0	14.0	-	-	-	-	-	-	-
C271	63	61.0	3.0	28.8	29.0	14.0	-	-	-	-	-	-	-
D271	75	-	-	-	-	-	-	-	-	-	-	-	-
E271	80	-	-	-	-	-	-	-	-	-	-	-	-
G271	100	-	-	-	-	-	-	-	-	-	-	-	-